

HOSPICE HORIZONS

NEWS FROM BIG BEND HOSPICE



Volume 24
Issue 3
FALL 2010



Montserrat Webb, William Webb & Montserrat Campos Fong



Tim and Dianne O'Brien



Sue Boynton



Mary Siebert Culp

Commemorating a Decade of Service: The 10th Anniversary of the Opening of Hospice House

In November 2000, Big Bend Hospice opened the doors of the Hospice House after years of dreaming, planning and fundraising. It was a new concept of care for the community, different from other facilities, a twelve bedroom home away from home for hospice patients needing an inpatient level of care. During the community open house, people came and were amazed at the personal touches in each individual bedroom, the warmth of the public spaces, the welcoming feel of the family room, the natural light pouring in from skylights and windows. It was the beginning of a new era in our area—the opening of our new Hospice House that five years later would be named after Margaret Z. Dozier.

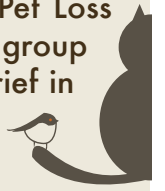
Each person who helped build Hospice House was motivated by a personal experience and a desire to make a difference. Here are some of the special people who helped build and furnish the Hospice House. Because of them so many have found the care and support they needed.

William and Montserrat Webb, "We were touched by the gentle spirit of Hospice at the most difficult time for our family. The compassionate care in our beloved Mami's (Montserrat Campos Fong) final journey will be forever in our hearts. May this 10th anniversary of Hospice House be the continuation of helping families through the final journey."

Mary Siebert Culp, "Big Bend Hospice saved my life. When my husband Al was ill, his doctor recommended Hospice care. Al was reluctant to call Big Bend Hospice but the doctor told him to do it for me; I was struggling to care for him alone and my health was suffering. The Big Bend Hospice team made the journey so much easier. When the opportunity came along to contribute to building Hospice House I was delighted to be part of helping provide Hospice services to other families in similar circumstances."

Grieving the Loss of a Pet

Big Bend Hospice is offering the final Coping With Pet Loss Group for 2010 in Leon County on November 11. This group provides a safe place to discover ways to help deal with grief in the company of others who have lost a pet and work together towards healing. For more information or to register please call Laurie Ward at 850-878-5310.



GriefPrints Conference A Huge Success

Eighty+ professional and peer helpers enjoyed a special day of education and networking at the 6th Annual Bereavement Conference on Friday, September 24. Presenters and attendees came from throughout Florida. As one attendee stated, "The only thing that makes me sad is that this is the 6th Annual - and it's the first one I have ever attended. I will never miss another one."

Special thanks to keynote speaker, Sue Cerulean, and our other presenters who facilitated 16 breakout sessions on topics related to youth bereavement, adult bereavement, expressive therapies, spirituality, and self-care.

We gratefully acknowledge the following individuals and agencies for their contributions: Kay Scherdin and Tallahassee Community College, Bruegger's Bagels, Missy Gunnels Flowers, Quarter Moon Import Shop, WFSU-FM, Ten Thousand Villages, Textures Handmade Market, Narcissus at Midtown, Lucy and Leo's Cupcakery, Capital Lanes, and Panera. Finally, special thanks to the presenters from our community: Grace Terry, Kristee Treadwell, Ilese Weingarten, Jessie Spraggins, Agnes Furey, Greg Burns, and Lee Chaix-McDonough.

Teen Woe-Be-Gone

Thursday, November 4, 2010

9:00 am - 4:30 pm

Held at The Retreat
at Bradley's Pond

Space is limited at this free retreat for teens. Call Caitlin at 878-5310 ext. 706 for more information or to register.



Caring Tree News

2010 National Survivors of Suicide Day (for ages 13+ -adult) November 20 at Big Bend Hospice • 1723 Mahan Center Blvd. 12:30-1:00 refreshments, 1-2:30 American Foundation for Suicide Prevention Suicide Survivors Broadcast, 2:30-3:00 optional remembrance activity. For more information or to register contact Pam at 878-5310 x799 or pam@bigbendhospice.org. This is a free community outreach of Big Bend Hospice and the American Foundation for Suicide Prevention.

Annual Worldwide Candlelighting for children who have died December 12 at Big Bend Hospice • 1723 Mahan Center Blvd. 6:30 pm with candlelighting at 7:00 pm. This is a community outreach of Big Bend Hospice and the Compassionate Friends of Tallahassee. For more information email tcfot@yahoo.com or Pam at 878-5310 x 799 or pam@bigbendhospice.org.

Carl and Elaine Bartelt



10th Anniversary

continued from page 1

Sue Chaires Boynton and Family, "My mother, Pearl Henderson Chaires, was a registered nurse in the early 1900s. We saw Hospice House as a special way to honor her memory and care for others at the same time."

Tim and Dianne O'Brien, "We were very excited for our community that Big Bend Hospice was going to have their own, new 'Hospice House.' We discussed it and decided that an extraordinary event called for an extraordinary donation. We called Big Bend Hospice and asked if they had a wish list, letting them know the range of donation that we were considering. We chose to donate towards the furniture in the great room because it would be a gathering place for all the families and friends visiting their loved ones. When the Hospice House was finished and furnished, we could not have been more pleased with our decision. Big Bend Hospice does irreplaceable work to help everyone deal with end of life issues with dignity and compassion."

Elaine and Carl Bartelt, "After seeing videos of Dame Cicely Saunders Hospice Home in England and visiting other hospice houses around the country, I was convinced that Tallahassee needed this type of enhanced Hospice care. While I served as the Big Bend Hospice CEO, I worked with both Boards to share this dream with the community. Carl and I wanted to be a part of this historic beginning of Hospice House, so we also put our financial resources where our heart was!"

Please Join Us in Commemorating a Decade of Service

**November 4, 2010
5:30 to 7:30 pm
1723 Mahan Center Blvd,
Tallahassee, FL**

This special time will allow us to reflect on the difference the Hospice House has made in our community and thank those who have made this dream a reality.

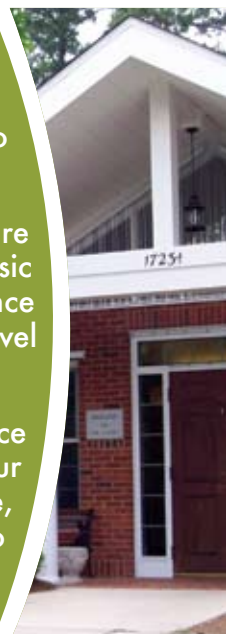
Please call Leila McClure at 878-5310 for more information.

Year End Giving

In this season of reflection and thanksgiving, we remember the people who shaped who we are as individuals. Those people who have made an everlasting impression and left their footprints on our hearts. What better way to acknowledge them than to make a gift in their memory or honor?

At Big Bend Hospice, as a result of your contributions, all patients receive the level of care that each deserves at the end of life. Because of your generosity, all patients have access to music therapy for pain and symptom management, the Caring Tree program which offers guidance to children and teens suffering a loss, and spiritual care which is provided at ten times the level required by state guidelines. And Big Bend Hospice turns no patient away for inability to pay.

As you consider a year-end tax deductible donation, please include Big Bend Hospice in your plans. As we care for more patients in our eight-county area, we must spread our services and resources ever farther. Not all types of assistance are covered by Medicare, Medicaid, or private insurers. Your support is vital to our organization as we continue to provide compassionate care throughout the North Florida region. Contact Pam Wilson at 850.878.5310 or go to our website www.bigbendhospice.org.



Carla's Corner

What a Difference 10 Years Makes....

What a Difference a Day Makes.... And the difference is you. What a lovely song that brought a Grammy to Dinah Washington in 1959 and which was inducted into the Grammy Hall of Fame in 1998. And what appropriate lyrics as we approach the 10th Anniversary of Hospice House.

Hospice House was a dream of the very dedicated and visionary leadership in 1997 of Elaine Bartelt and her staff & boards. They knew that a Hospice House would allow for a very special kind of environment in which those who were not able to stay at home, for whatever reason, would be cared for with dignity and compassion while receiving expert medical care around the clock. Their vision was that someone could walk into the Hospice House and feel the love and comfort that was offered there.

What a difference ten years makes. This vision for the future that was developed by Elaine and her staff and built through the efforts of M.T. Mustian, Dr. George Lewis and the hard work of our Foundation and Operations Boards has become a reality. Who would have guessed how much use our Hospice House would receive or that ten years later there would be a waiting list of patients needing a Hospice House bed. As we commemorate our 10th anniversary I am humbled by the stories families have shared with me about their experiences at our House. Although every story is unique, they each share the common theme that the Hospice House was a gift to their families. During such a stressful and frightening time, they had an amazing home away from home. They told me how their fears melted away when they walked in the door, greeted by volunteers or staff. How they saw their loved one's pain and symptoms dissipate with the expertise of the Hospice House staff of nurses, doctors, social workers, chaplains, music therapists, aides and volunteers. How they themselves had the first good night's sleep in months knowing that their loved one was being cared for so tenderly and expertly. How they knew they were not alone during this difficult time.

Over the years, over 5,000 patients and their families have been served at Hospice House. Many have come for symptom management and have gone home. Many have come for end of life care and died peacefully surrounded by family and friends. Whatever the reason for their stay, they have received exceptional care. All because a small group of individuals believed in a new concept in patient care and took the chance on making it a reality. What a difference ten years has made. The hard work of many people, the commitment of fiscal resources by our donors and the trust of our community enabled us to follow our dream to completion. To all of those who dared to dream with us...the difference was you!



Carla Braveman, RN, MEd, CHCE
President and CEO

2010 Big Bend Hospice Trees of Remembrance

It's time again for the 2010 Trees and Services of Remembrance. This year's theme is a beautiful quote from Walt Whitman: "Although you may no longer see the songbird, if you listen with your heart, you can still hear his song." Our sixteenth season of remembrance opens on Sunday, November 21st with the Leon County Service of Remembrance at Capital City Country Club, 1601 Golf Terrace Drive. A Service of Remembrance is held in each of the eight counties Big Bend Hospice serves; please refer to the listing on the back cover for the service location, date and time convenient for you.

If you can't make it to a Service or one of the Tree locations our virtual Tree of Remembrance may be your best option. Go to www.treeofremembrance.org. Donate online and the tribute to your loved one(s) will be available to view for an entire year. Write a personal message on your virtual ornament or even upload a photo of your loved one. Friends and family can visit the website to view the messages and photos.

Blue skies and plenty of sunshine were the order of the day September 13th for Dr. Bass' Large Mouth Open Golf Tournament. Eighteen teams teed off for the morning session, and in the afternoon thirty teams came out to support Big Bend Hospice. Universal Engineering's team of John Shellabarger, Tom Golladay, Rick Robinson and Josh Shelton won first place in the morning session. Capital City Bank's team of Randy Pople, Ron Brafford, Pat Murrah and Jimmy Suber won first place in the afternoon session. First, second and third place teams in both flights won gift certificates to the Golden Eagle Pro Shop.

This event funds patient care and helps provide the services Big Bend Hospice offers patients and families that are not reimbursed by Medicaid, Medicare or private insurance. This includes music therapy, grief and loss counseling and our chaplain services. We are indebted to our presenting sponsor, Capital City Bank for their support since 2005.

Our thanks to 2010 sponsors:

- Capital City Bank
- Thomas Howell Ferguson P.A. • Florida Bank
- redwire • Greenberg Traurig • BB&T
- Landrum-Yaeger • Bob & Gail Knight
- Champion Chevrolet • AT&T
- Florida Cable Telecommunications Association
- Verizon • WCTV • Cumulus
- Tallahassee Democrat • Lamar • Tri-Eagle

The hard work of soliciting sponsors and teams falls to a wonderful group of volunteers who serve as the Dr. Bass' Golf Tournament Committee: Ben Wilkinson - Chair, Sam Ard, Dr. Glenn Bass, Bo Blutworth, Chris Counts, Lon Fellenz, Ted Frazee, Michelle Griggs, Michael Kramer, Michael Penney, Robin Safely, Ron Tate, Steve Wilkerson and Roy Young.

Big Bend Hospice also thanks Noreen Martin for organizing volunteers and FSU Lady Golfers Mary Beth Ramsay, Whitney Wenglaz and Jen King for assisting golfers on hole #18 for donations.

Big Bend Hospice Welcomes Pam Wilson



Pam Wilson, our new Foundation Director, comes to us from Westminster Oaks. "Serving the community through Big Bend Hospice meshes with my passion to make a difference in the lives of others. I look forward to making that difference together!"

2010 Dr. Bass' Large Mouth Open Golf Tournament



Morning session winners from Universal Engineering
John Shellabarger, Tom Golladay,
Rick Robinson & Josh Shelton



Afternoon session winners from Capital City Bank
Randy Pople, Ron Brafford,
Jimmy Suber & Pat Murrah



Afternoon Session Starting

Veterans Day Remembrance Service

- Thursday, November 4, 2010
11:30 am
VA Outpatient Clinic Atrium
1607 St. James Court in Tallahassee

The service will feature music and words of encouragement, as well as an opportunity for participants to speak the name of the veteran(s) they wish to honor. For more information see our website www.bigbendhospice.org

Big Bend Hospice Invites You To Tee Up For a Good Cause!

Big Bend Hospice Wakulla County Golf Tournament
October 29th at the Wildwood Country Club.

- Lunch and Registration at 11:30 pm followed by a shotgun start at 12:30 pm.

For sponsorship information or to register a team, contact Pam Allbritton at 508-8749 or register on the web at www.bigbendhospice.org

BIG BEND HOSPICE BOARD OF DIRECTORS

John O'Dea *Chair*
Bob Inzer *1st Vice Chair*
David Jones, MD *2nd Vice Chair*
Steve Mindlin *Treasurer*
Tim Sanders *Secretary*
Raymond Capelouto
Past Chairman
Richard Barnum
Dr. Jacqueline Beck
Rocky Bevis
Brant Copeland
Holly Dincman
Judy Greenwald
Matthew Hansard
Rev. Dr. R. B. Holmes, Jr.
Rheb Harbison
Mollie Hill
Todd Patterson, DO
Michael Penney
Gloria Rollins
Jay Smith
Dean Watson, MD
Morris Young
Blucher Lines
Carla Braveman,
BSN, RN, MEd, CHCE
President & CEO
B. David Robinson, MD
Medical Director

Big Bend Hospice is a community based 501(c)(3) non-profit organization dedicated to exemplifying the best in end of life care and support.

Questions and comments about this newsletter should be directed to: Diane Tomasi, 850.878.5310 or diane@bigbendhospice.org

Big Bend Hospice Offers Hope for the Holidays

Big Bend Hospice is offering a two-hour program to be held November 18th and then again on December 6th from 6:00 – 8:00pm that will provide practical tools for developing coping skills while grieving through the holiday season. This wonderful program of support is for anyone in the community who has experienced the death of a loved one. To register or for more information, please contact Wendy Vargo, 878-5310, X704

Caring Tree Family Holiday Session

The holidays can create special challenges for families who have experienced the death of a loved one. On December 14, The Caring Tree will host a special session of Hope for the Holidays for grieving children, teens, and families that will provide education, fellowship, and a time of remembrance. Dinner is provided. Go to www.bigbendhospice.org for more information.

Patient/Family Holiday Gift Drive

The holidays are traditionally a time of joy, but if you are ill, or caring for someone who is, the stress can seem overwhelming. Assisting our patients and their families in maintaining holiday traditions and making lasting holiday memories is what the gift drive is all about. Please consider involving your group or organization in this worthwhile project, or just participate individually. Contact Laurie Ward, at 878-5310, X752, or laurie@bigbendhospice.org to sign up and/or for more information.

BIG BEND HOSPICE FOUNDATION

Pam Wilson
Executive Director

BOARD OF TRUSTEES

Blucher Lines
Chairman
Rocky Bevis
Robert S. "Bo" Bludworth
Carla Braveman
Dee Hopkins Crusoe
Sammie D. Dixon, Jr.
Leslie Elliott
Grace Labasky
Wilma Lauder
Jean McCully
Tracy Morales
Gwen Morgan
M.T. Mustian
John O'Dea
Tom Proctor, Sr.
Jennifer Rupert
Ronald Tate
Susan Turner
Steve Wilkerson
Ben H. Wilkinson, Sr.

EMERITUS MEMBERS

John Aurell
Valerie Cattau
Gail Croy
Walter Culley
David Harvey
Judy Pate
Palmer Proctor
Frank Shaw, Jr.
Betty Ann Skelton
Adelaide Suber

ADVISORS

Stan Barnes
Eleanor Smith
Roy Young

October 12 6:30 pm Caring Tree Teen Night
Call Eman at 878-5310 ext 749

October 18 6:00 pm Suicide Loss Support Group
Call Wendy at 878-5310 ext 704

October 18 6:30 pm Volunteer Inservice "Meditation and Relaxation"
Call Ginny at 878-5310 ext 196

October 21 6:00 pm Breaking Bread Clergy Luncheon
Call Candace at 878-5310 ext 250

October 26 6:00 pm Caring Tree Children's Night
Call Caitlin at 878-5310 ext 706

October 29 11:30 am Wakulla County Golf Tournament
Call Pam at 508-8749

November 4 9:00 am Teen Woe-Be-Gone
Call Caitlin at 878-5310 ext 706

November 4 11:30 am Veterans Service of Remembrance
Call Laurie at 878-5310 ext 752

November 4 5:30 pm Hospice House 10th Anniversary
Call Leila at 878-5310 ext 178

November 7 6:00 pm Infant and Pregnancy Loss Group
Call Wendy at 878-5310 ext 704

November 8 6:00 pm Vigil Volunteer Training
Call Ginny at 878-5310 ext 196

November 9 6:00 pm Caring Tree Feast of Remembrance
Call Pam at 878-5310 ext 799

November 10 4:00 pm Wakulla County Open House
Call Pam at 508-8749

November 11 6:00 pm Pet Loss Support Group
Call Laurie at 878-5310 ext 752

November 15 6:00 pm Suicide Loss Support Group
Call Wendy at 878-5310 ext 704

November 18 6:00 pm Hope for the Holidays
Call Wendy at 878-5310 ext 704

November 18 5:00 pm Perry Office Open House
Call Michele at 566-7491

November 20 1:00 pm 10th Annual Volunteer Holiday Appreciation
Call Ginny at 878-5310 ext 196

November 21 4:00 pm Leon County Service of Remembrance
Call Candace at 878.5310 ext 250

November 21 12:00 pm Tree of Remembrance Opens at Best Buy of Tallahassee
Call Laura at 878-5310 ext 701

November 22 6:30 pm Madison County Volunteer Inservice "Stress Management"
Call Karen at 973-8131

November 26 Dusk Appalachian Lighting of the Luminaries
Call Pam at 508-8749

November 28 3:00 pm Franklin County Service of Remembrance
Call Pam at 508-8749

November 30 6:00 pm Jefferson County Service of Remembrance
Call Michele at 566-7491

December 2 6:00 pm Gadsden County Service of Remembrance
Call Travia at 556-1786

December 3 6:30 pm Wakulla County Service of Remembrance
Call Pam at 508-8749

December 5 6:00 pm Infant and Pregnancy Loss Group
Call Wendy at 878-5310 ext 704

December 6 6:00 pm Hope for the Holidays
Call Wendy at 878-5310 ext 704

December 7 6:00 pm Madison County Service of Remembrance
Call Michele at 566-7491

December 7 6:30 pm Volunteer Inservice "Patient Safety"
Call Ginny at 878-5310 ext 196

December 9 6:00 pm Taylor County Service of Remembrance
Call Michele at 566-7491

December 9 7:00 pm Liberty County Service of Remembrance
Call Travia at 556-1786

December 14 6:00 pm Caring Tree Hope for the Holidays
Call Pam at 878-5310 ext 799

December 20 6:00 pm Suicide Loss Support Group
Call Wendy at 878-5310 ext 704

OCTOBER

Sun	Mon	Tues	Wed	Thurs	Fri	Sat
					1	2
3	4	5	6	7	8	9
10	11	12	13	14	15	16
17	18	19	20	21	22	23
24 31	25	26	27	28	29	30

NOVEMBER

Sun	Mon	Tues	Wed	Thurs	Fri	Sat
1	2	3	4	5	6	7
8	9	10	11	12	13	14
15	16	17	18	19	20	21
22	23	24	25	26	27	28
29	30	31				

DECEMBER

Sun	Mon	Tues	Wed	Thurs	Fri	Sat
			1	2	3	4
5	6	7	8	9	10	11
12	13	14	15	16	17	18
19	20	21	22	23	24	25
26	27	28	29	30		



**Big Bend
Hospice**

your hometown hospice, licensed since 1983

1723 Mahan Center Boulevard
Tallahassee, FL 32308-5428

Return Service Requested

NON-PROFIT
ORGANIZATION
US POSTAGE
PAID
TALLAHASSEE, FL
PERMIT #134

Leon County

Sunday, November 21st
at 4:00 pm
Capital City Country Club
1601 Golf Terrace Drive in
Tallahassee, Florida

Franklin County

Sunday, November 28th
at 3:00 pm
Riverfront Park
Water Street in
Apalachicola, Florida

Jefferson County

Tuesday, November 30th
at 6:00 pm
Harvest Christian Center
1599 Spring Hollow Road
in Monticello, Florida

Gadsden County

Thursday, December 2nd
at 6:00 pm
William A. "Bill" McGill
Library in the Meeting Room
732 South Pat Thomas Pkwy
in Quincy, Florida

Wakulla County

Friday, December 3rd
at 6:30 pm
Crawfordville Women's Club
64 Ochlocknee Street in
Crawfordville, Florida

Madison County

Tuesday, December 7th
at 6:00 pm.
First Baptist Church in
the Historic Sanctuary
134 SW Meeting Avenue
in Madison, Florida

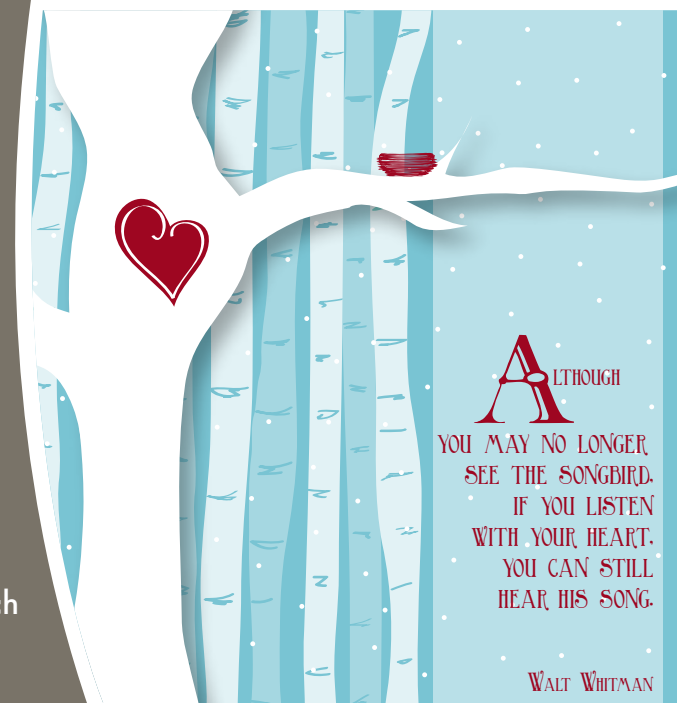
Taylor County

Thursday, December 9th
at 6:00 pm.
Perry Garden Club
206 Forest Park Drive
in Perry, Florida

Liberty County

Thursday, December 9th
at 7:00 pm
Grace United Methodist Church
18633 NE State Road 65 in
Hosford, Florida

2010 Service of Remembrance Schedule



ALTHOUGH
YOU MAY NO LONGER
SEE THE SONGBIRD.
IF YOU LISTEN
WITH YOUR HEART.
YOU CAN STILL
HEAR HIS SONG.

WALT WHITMAN